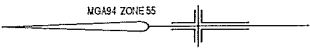


ERSKINE

ROAD

CRESCENT

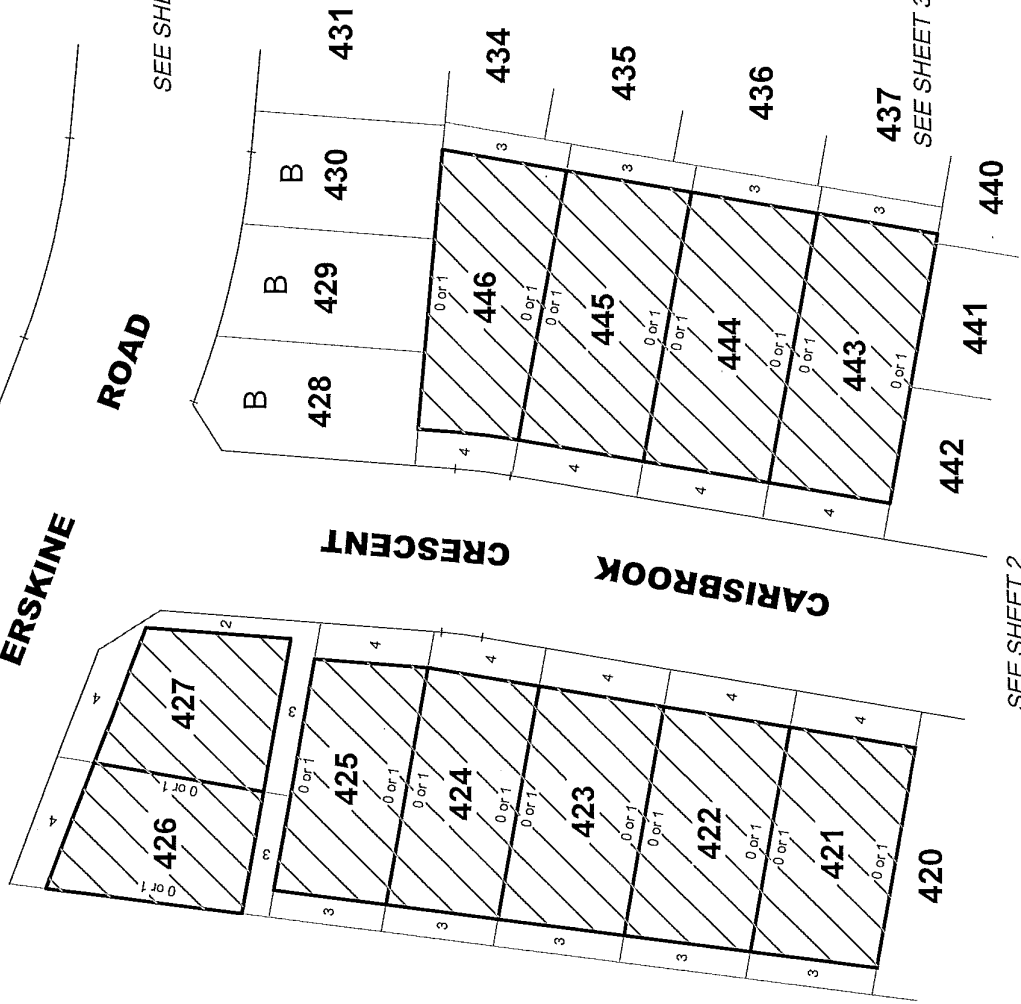
CARISBROOK



SEE SHEET 3

SEE SHEET 3

SEE SHEET 2



LEGEND



BUILDING ENVELOPE

B

SMALL LOT HOUSING CODE TYPE B

1. THE BUILDING ENVELOPES AND GARAGE ENVELOPES ON THIS PLAN ARE SHOWN ENCLOSED BY THICK CONTINUOUS LINES.
2. THIS DIAGRAM IS TO BE READ IN CONJUNCTION WITH THE MEMORANDUM OF COMMON PROVISIONS.
3. THE BUILDING CAN BE BUILT ON EITHER SIDE BOUNDARY WHERE NOTED AS '0 or 1' ON THIS DIAGRAM BUT MUST MAINTAIN A MINIMUM 1m SET BACK ON THE OPPOSITE BOUNDARY.

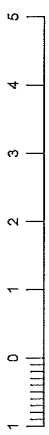
SHEET 1

ORIGINAL SCALE

SHEET SIZE

A4

1:100



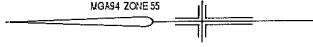
LENGTHS ARE IN METRES

REF: **22558/4MCP**
 VERSION: 22558-4-MCP-A.dwg
 DATE: 11/05/2022

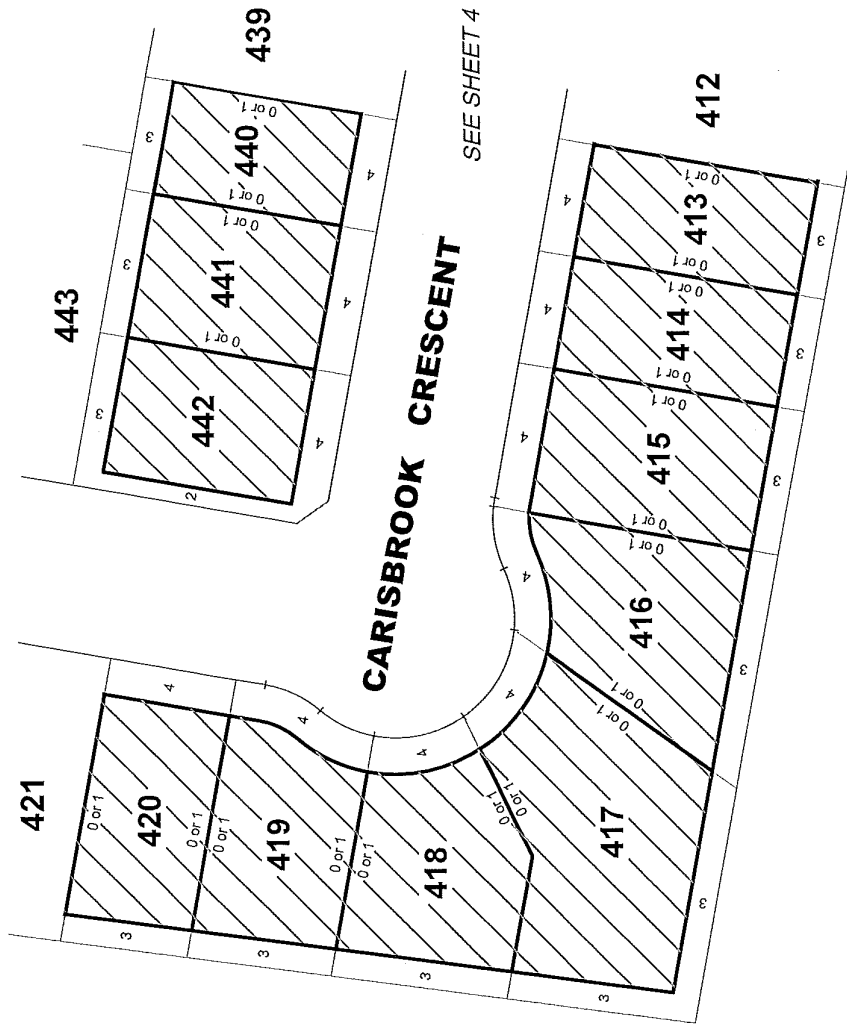
Reeds Consulting Pty Ltd
 Lvl 6, 440 Elizabeth Street
 Melbourne Victoria 3000
 P 031 8660 3000
 www.reedsconsulting.com.au
 surv@reedsconsulting.com.au



MG4S4 ZONE 55



SEE SHEET 1



LEGEND



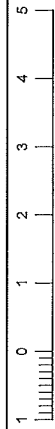
BUILDING ENVELOPE

B SMALL LOT HOUSING CODE TYPE B

1. THE BUILDING ENVELOPES AND GARAGE ENVELOPES ON THIS PLAN ARE SHOWN ENCLOSED BY THICK CONTINUOUS LINES.

2. THIS DIAGRAM IS TO BE READ IN CONJUNCTION WITH THE MEMORANDUM OF COMMON PROVISIONS.

3. THE BUILDING CAN BE BUILT ON EITHER SIDE BOUNDARY WHERE NOTED AS "0 or 1" ON THIS DIAGRAM BUT MUST MAINTAIN A MINIMUM 1m SET BACK ON THE OPPOSITE BOUNDARY.



LENGTHS ARE IN METRES

SHEET 2

ORIGINAL SCALE

SHEET SIZE

A4

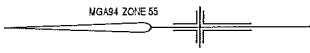
REF: 22558/4MCP

VERSION: 22558-4-MCP-A.dwg

DATE: 11/05/2022

Reeds Consulting Pty Ltd
 LY 6, 440 Elizabeth Street
 Melbourne Victoria 3000
 P 031 8660 3000
 www.reedsconsulting.com.au
 surveys@reedsconsulting.com.au

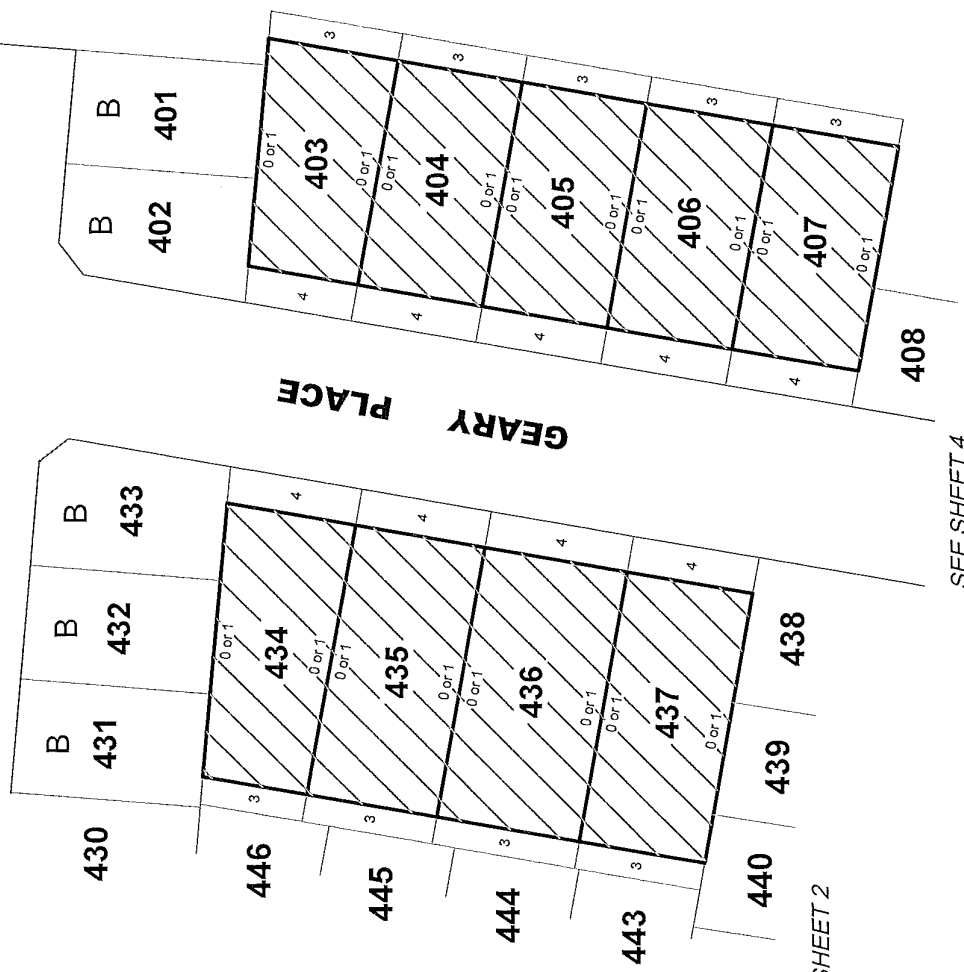





SEE SHEET 1

ERSKINE

ROAD


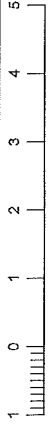


LEGEND

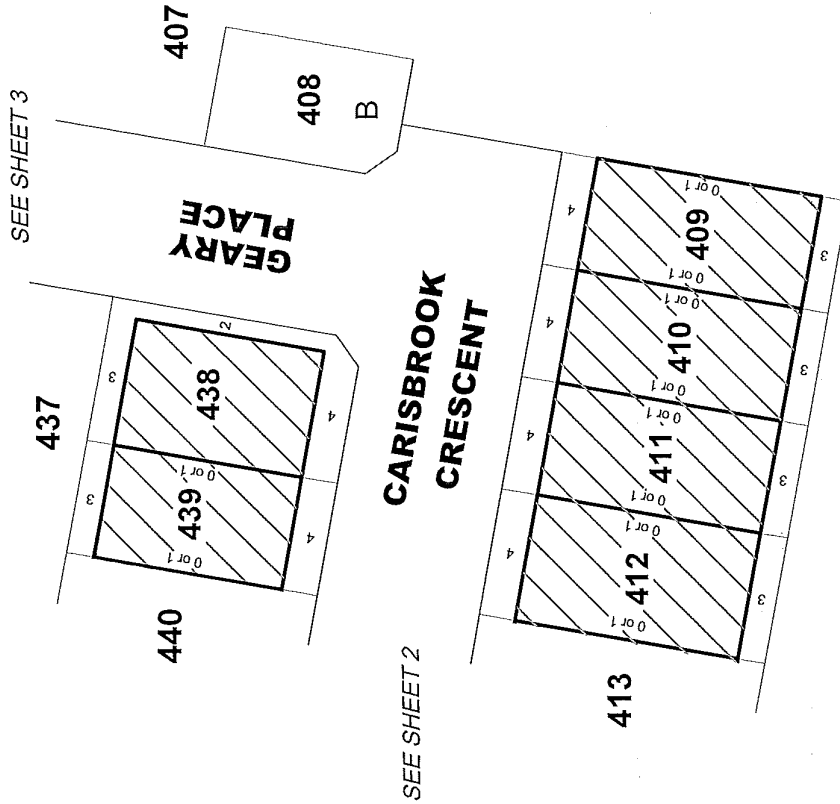
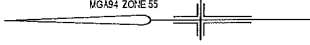
-  BUILDING ENVELOPE
- B** SMALL LOT HOUSING CODE TYPE B

1. THE BUILDING ENVELOPES AND GARAGE ENVELOPES ON THIS PLAN ARE SHOWN ENCLOSED BY THICK CONTINUOUS LINES.
2. THIS DIAGRAM IS TO BE READ IN CONJUNCTION WITH THE MEMORANDUM OF COMMON PROVISIONS.
3. THE BUILDING CAN BE BUILT ON EITHER SIDE BOUNDARY WHERE NOTED AS "0 or 1" ON THIS DIAGRAM BUT MUST MAINTAIN A MINIMUM 1m SET BACK ON THE OPPOSITE BOUNDARY.

SEE SHEET 4

 <p>Reeds Consulting Pty Ltd Lvl 6, 440 Elizabeth Street Melbourne Victoria 3000 p (03) 8660 3000 www.reedsconsulting.com.au surveys@reedsconsulting.com.au</p>	ORIGINAL SCALE 1:100	SHEET 2 REF: 22558/4MCP VERSION: 22558-4-MCP-A.dwg DATE: 11/05/2022
	SHEET SIZE A4	LENGTHS ARE IN METRES 

MGA84 ZONE 55



LEGEND



BUILDING ENVELOPE

B

SMALL LOT HOUSING CODE TYPE B

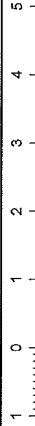
1. THE BUILDING ENVELOPES AND GARAGE ENVELOPES ON THIS PLAN ARE SHOWN ENCLOSED BY THICK CONTINUOUS LINES.

2. THIS DIAGRAM IS TO BE READ IN CONJUNCTION WITH THE MEMORANDUM OF COMMON PROVISIONS.

3. THE BUILDING CAN BE BUILT ON EITHER SIDE BOUNDARY WHERE NOTED AS "0 or 1" ON THIS DIAGRAM BUT MUST MAINTAIN A MINIMUM 1m SET BACK ON THE OPPOSITE BOUNDARY.

SEE SHEET 3

SEE SHEET 2



LENGTHS ARE IN METRES

ORIGINAL SCALE

SHEET SIZE

A4

SHEET 2

REF: **22558/4MCP**

VERSION: 22558-4-MCP-A.dwg

DATE: 11/05/2022

Reeds Consulting Pty Ltd
 LV 6, 440 Elizabeth Street
 Melbourne Victoria 3000
 p 03 8660 3800
 www.reedsconsulting.com.au
 survey@reedsconsulting.com.au



Memorandum of common provisions
Section 91A Transfer of Land Act 1958

ANNEXURE 2

ATTACHMENT 3 OF THE BALLARAT WEST PRECINCT STRUCTURE PLAN